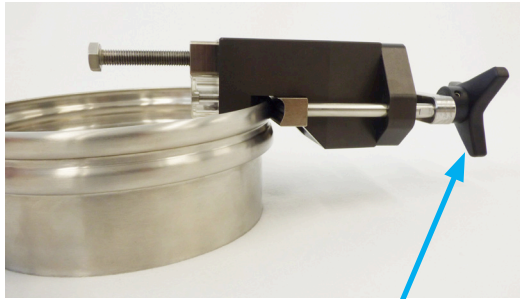
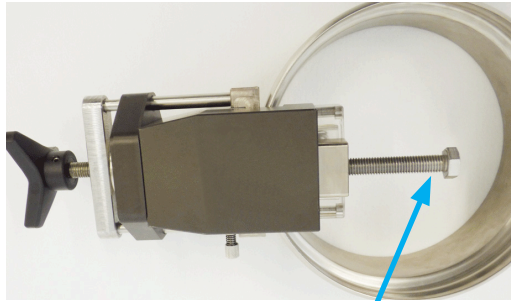


BFM® 'Smiley Face' Hole Punch



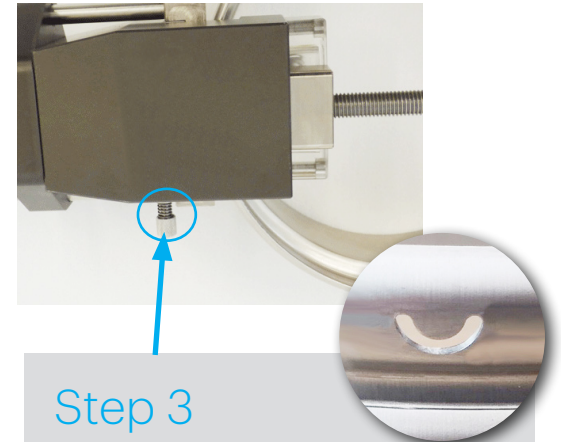
Step 1

Place the BFM® 'Smiley Face' Hole Punch on the edge of the BFM® spigot cuff as shown, and manually tightened with the knob until it is sitting firmly against the spigot.



Step 2

Using a ratchet spanner, tighten the bolt until the pneumatic punch head pushes through the spigot cuff (this may take a minute to wind tight enough to activate the punch).



Step 3

Unscrew the bolt completely and unwind the knob until the spring-loaded pin on the side can be pushed in. Keep holding the pin in while you wind the knob back in again until it releases the tool from the spigot edge.

Only the BFM® Smiley Face Tool can be inserted into this hole to release the cuff. The Smiley Face Hole Punch can be used on any diameter of BFM® fitting spigot.